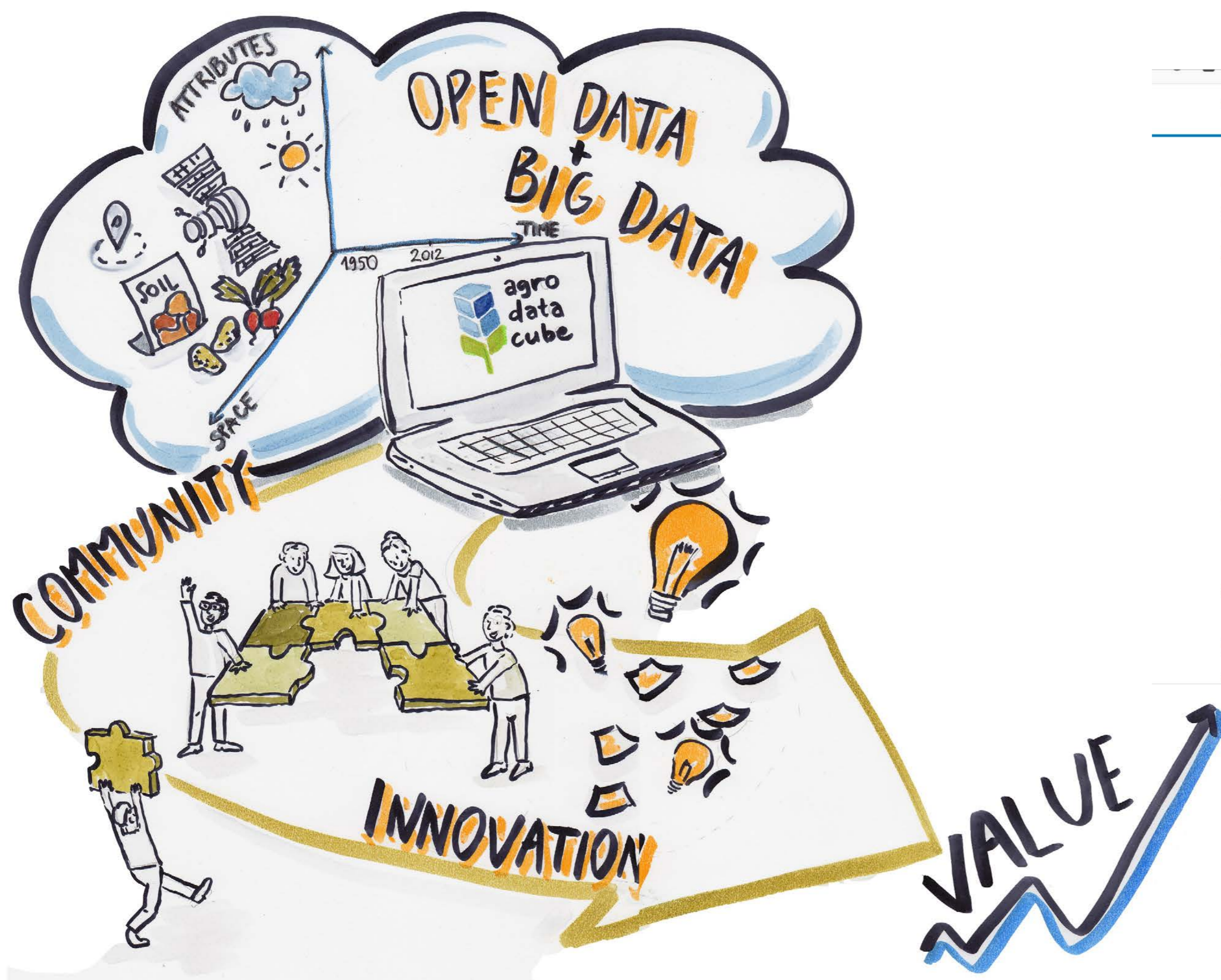




A Big Open Data collection for Agri-Food Applications

<http://AgroDataCube.wur.nl>

<https://doi.org/10.18174/455759>



For the **agricultural domain**,

- AgroDataCube is a common reference point for data rich applications in agriculture;
- has been set up with a focus on agricultural production and its environmental performance;
- agricultural parcels are used as reference points and other data sources on soils, weather, height, growth, and water access are connected to these agricultural parcels.

From **Community perspective**, AgroDataCube

- activates the community of developers to further improve it as a collective public good;
- has been used in several hackathons and development sprints as common reference point on data;
- has achieved 900 users in 12 months;
- is used by private sector, governmental bodies and research projects.

From a **technology perspective**, AgroDataCube:

- brings together many open data sources available in the Netherlands;
- has consistent time series and geographical units from 2012 to the current year;
- is available through an open source API;
- with Postman documentation, meta-data and shared coding examples on GitHub.

An initiative of Wageningen Environmental Research: Henk Janssen (Henk.Janssen@wur.nl), Rob Knapen (Rob.Knapen@wur.nl); Yke van Randen, Inge LaRiviere, Sander Janssen